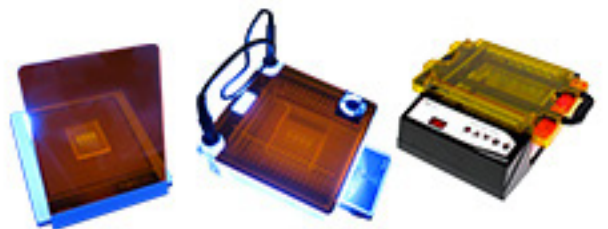


version 1.0



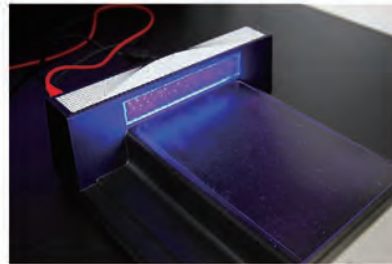
2023-2024 BROCHURE

Blue Light Technology





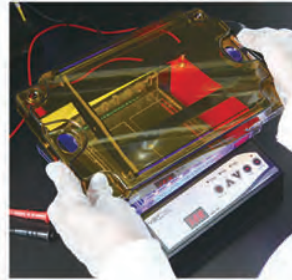
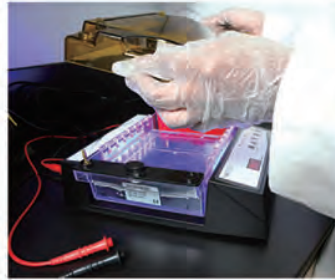
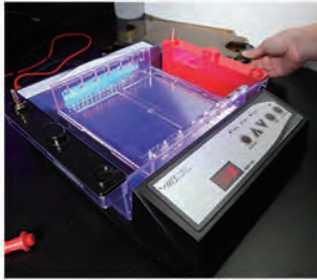
FC CE
MBE-150-PLUS



MBE-G-Y1



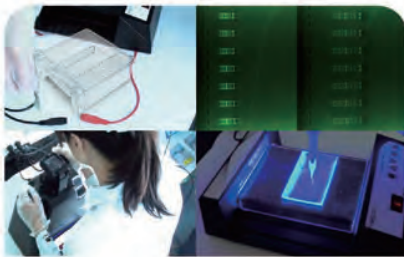
MBE-150-3



ME15-UV15-TH01



ME15-UV15-TH02

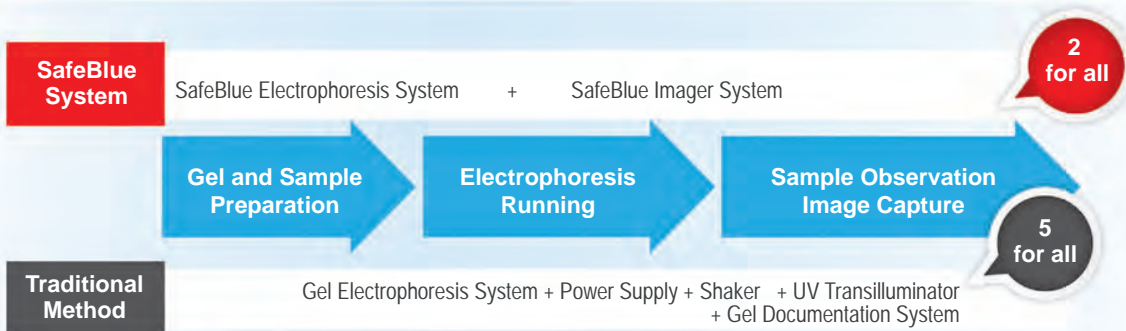


FC CE
MBE-150



Cat. No.	MBE-150	MBE-150-PLUS
Light control	On / Off switch	
Output voltage	10-150V / 1V	
Output current	10-300mA / 1mA	
Output power	30W	
Output type	Constant voltage or constant current	
Timer	999 (min) with alarm / Continuous	
Operating temperature	Ambient to 40°C	
Electrophoresis tank& amber filter lid	N/A	Yes

Cat. No.	MBE-IMG-CA
Camera type	24.2MP digital camera, Wi-Fi function
Aperture	f/3.5-6.3(IS STM Lens)
Shutter speed	1/4000 - 30sec. (available range varies by shooting mode)
Storage media	SD memory card, Wi-Fi to PC, Smartphone or Tablet
Darkroom dimension	(WxLxH)340x195x400mm



4 in 1 feature allows you to run as you see in real-time motion (run, view, capture and cut gel) with simple and easy set up on the image capture/analysis software

MBE-150-PLUS Innovative Electrophoresis System

1. Early detection of running error (run as you see)
2. Prevention for breaking gel- no more gel transferring (no more gloves!!)
3. Time saving gel staining & de-staining
4. Compact in size (no large lab area required)

Blue light Illuminator

BluView Transilluminator, MBE-200A

- Thinner and more lightweight body
- Easy to carry
- Aluminum alloy casing design
- Low heat dispersion
- Energy saving product
- 470nm harmless blue light for direct human contact

Cat. No.	MBE-200A
Dimension(mm)(WxLxH)	Approx. 200x200x13.9
Viewing Area(mm)(WxL)	153x153
Blue Light Source	15W
Illuminator Base Design	Flat Bed
Blue Light Wavelength	470nm
Automatic Shutdown	Approx. 6 min
Material	Aluminum Alloy
Power	DC 12V, 2A
Weight	Approx. 760g

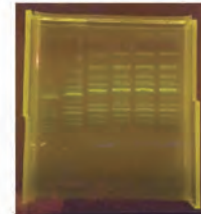


Major Science BluView Transilluminator uses the harmless blue LED lights to replace the aggressive UV lights, and allows you to directly view the experiment result without wearing any UV protection equipment.

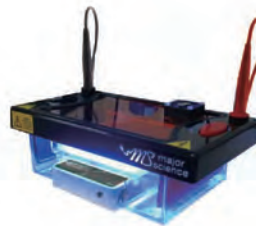
BluView Transilluminator, MBE- 00

- Portable 470nm blue light
- Slim design fits in most of electrophoresis tanks
- Real time observation
- Efficient and early stage mistake detection
- Ultra high light uniformity
- Fit in a majority of different brands of mini and midi size...

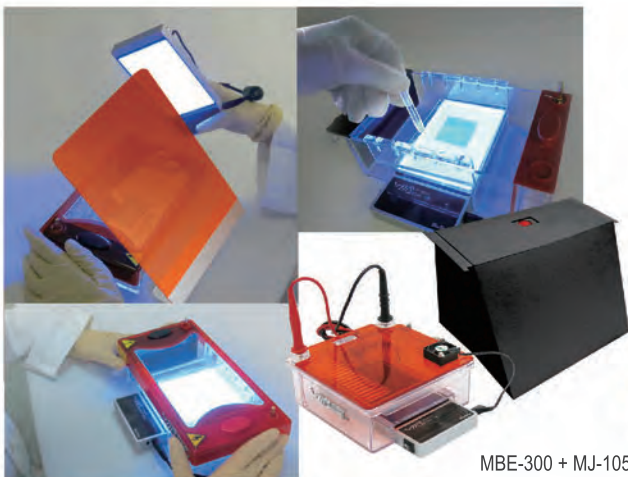
Cat. No.	MBE-300
Dimension(mm)(WxLxH)	Approx. 86x170x25
Viewing Area(mm)(WxL)	Approx. 112x74.6
Blue Light Source	20W
Illuminator Base Design	Flat Bed
Blue Light Wavelength	470nm
Automatic Shutdown	Approx. 6 min
Material	Aluminum Alloy
Power	DC 12V, 2A
Weight	Approx. 338g



Aluminum alloy provides sturdy safe structure



MBE-300 + ME 10 Tank horizontal electrophoresis system



MBE-300 + MJ-105A





www.majorsci.com

info@majorsci.com



Taiwan Headquarters

Headquarters:

No. 156, Sec. 1, Guoji Rd., Taoyuan Dist.,
Taoyuan City 33061, Taiwan
T/+886-3-3762878
F/+886-3-3761310

Factory:

No.19, Ln. 207, Huakang St. Bade Dist.,
Taoyuan City 33464 Taiwan
T/ +886-3-3623319
F/ +886-3-3623133
Email : info@majorsci.com

Shanghai Office

Room 612, International business exhibition center,
9300 Hunan Road, Pudong, Shanghai, China
National toll-free No.:400-823-9177
T/ +86-21-50795277
F/ +86-21-50795277

US Office

19959 Sea Gull Way
Saratoga, CA 95070
U.S.A.
T/ +1-408-366-9866
F/ +1-408-446-1107

India Office

D. No. 12-13-99, Satguru Apts. Extn.
Street. No. 3, Lane No.1, Tarnaka
Secunderabad – 500 017. India
T/ +91-40-27001515
T/ +91-40-27001586

