

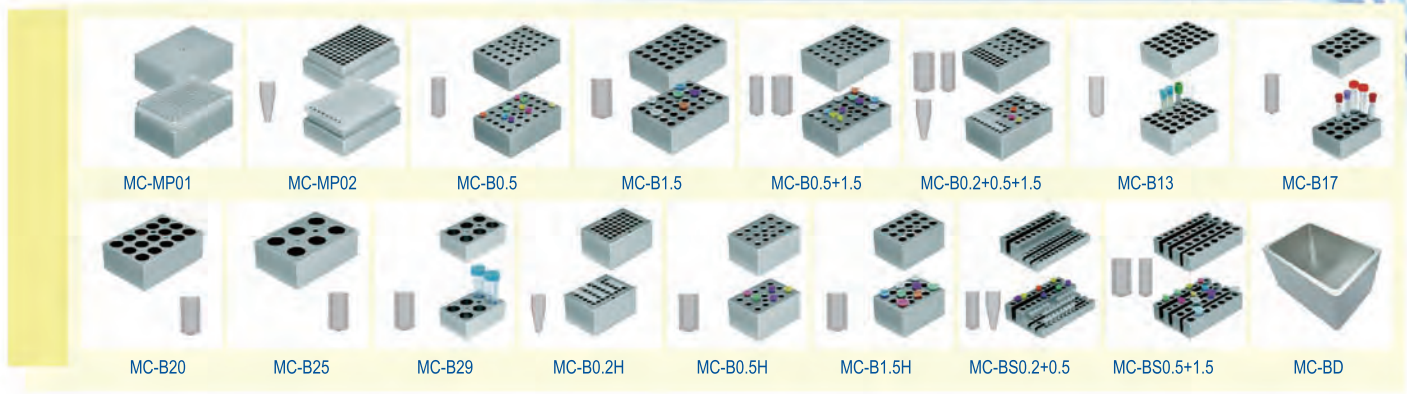
version 1.0



2023-2024 BROCHURE

Stirring Water Bath





MC-MP01	For Microplate; titerplate (Plain Block)
MC-MP02	For 96 wells deep microplate or PCR plate
MC-B0.5	For 0.5ml, 30 wells
MC-B1.5	For 1.5 or 2.0ml, 30 wells
MC-B0.5+1.5	Combination: for 1.5ml or 2.0ml tube, 15 wells and 0.5ml tube, 15 wells (on the same side)
MC-B0.2+0.5+1.5	Combination: 0.2ml tube (or strip tube for 8 wells), 24 wells; 1.5ml or 2.0ml tube, 10 wells and 0.5ml tube, 10 wells (on the same side)
MC-B13	Well size 13mm, 30 wells
MC-B17	For 15ml centrifuge tube, 15 wells
MC-B20	Well size 20mm, 15 wells
MC-B25	Well size 25mm, 6 wells

MC-B29	For 50ml centrifuge tube, 6 wells
MC-B0.2H	(1/2) half block for 0.2ml tube, 40 wells (or 0.2ml PCR strip tube for 8 wells x 5) One Ultimate Dry Bath Incubator can insert 2ea of half block
MC-B0.5H	(1/2) half block for 0.5ml tube, 15 wells One Ultimate Dry Bath Incubator can insert 2ea of half block
MC-B1.5H	(1/2) half block for 1.5 or 2ml tube, 15 wells One Ultimate Dry Bath Incubator can insert 2ea of half block
MC-BS0.2+0.5	Combination: 0.2ml tube, 36 wells; 0.5ml, 20 wells
MC-BS0.5+1.5	Combination: 0.5ml tube, 18 wells; 1.5ml, 14 wells
MC-BD	Ultimate bead bath block, (WxLxH) 90 x127x76mm
MS-BL95-E	Block Lifter, 95mm length with E-type retaining rings

Stirring Water Bath

SWB series

Cat. No.	SWB-10L-1	SWB-10L-2	SWB-20L-1	SWB-20L-3
Number of stirring mechanisms	1	2	1	3
Stirring speed	400-1500rpm (measured by percentage)			
Bath capacity	Approx. 10L		Approx. 20L	
Water circulation function	Yes			
Display	LCD			
Heating power	600W		800W	
Controller	Digital microprocessor controller			
Bath temperature	5 °C above ambient to 99 °C			
Temperature increment	0.1°C			
Temperature accuracy	± 0.2 °C at 37 °C			
Timer	99 (hr): 59 (min) / Continuous			
Safety device	Warning indication on screen with alarm and automatic shut down			
Bath Inner dimension (mm)(WxLxH)	240x300x150		300x500x150	
Dimension (mm)(WxLxH)	255x355x240 (without lid)		330x540x240 (without lid)	

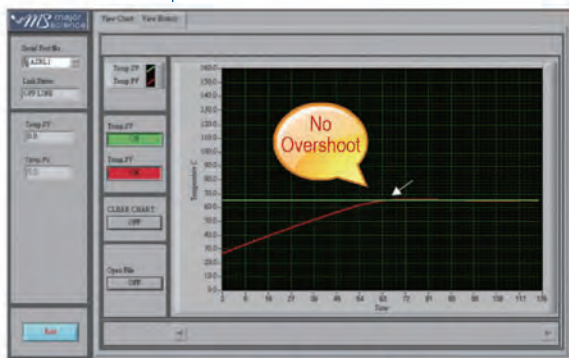
As little as 34/60 mins required to reach 65°C in 10L/20L bathes.



SWB-20L

SWB-10L

*Using as a water bath and the picture is only for reference.



SWB-20L Series

Temp. set value:65°C
Initial temp. value:27°C
Water volume : 12 liters
Process time: Approx. 60mins

SWB-10L Series

Temp. set value:65°C
Initial temp. value:17°C
Water volume : 5 liters
Process time: Approx. 34mins

- Built-in magnetic stirring mechanism ensures outstanding temperature uniformity
- Polycarbonate lid for better observation
- User temperature calibration
- Data logging software available upon ordering

Max. capacity:
15 sets of 250ml flasks
8 sets of 500ml flasks



Illustrates max. chamber capacity only.

Max. capacity:
6 sets of 250ml flasks
4 sets of 500ml flasks



Built-in magnetic stirring mechanism ensures outstanding temperature uniformity

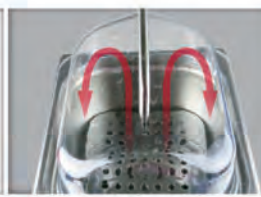


Water circulation function

- Magnetic agitator
- Stir bar



Side opening of the lid to allow minimum evaporation while maintaining water bath temperature.



Concave lid design allows condensation flow back to the tank.



www.majorsci.com

info@majorsci.com



Taiwan Headquarters

Headquarters:

No. 156, Sec. 1, Guoji Rd., Taoyuan Dist.,
Taoyuan City 33061, Taiwan
T/+886-3-3762878
F/+886-3-3761310

Factory:

No.19, Ln. 207, Huakang St. Bade Dist.,
Taoyuan City 33464 Taiwan
T/ +886-3-3623319
F/ +886-3-3623133
Email : info@majorsci.com

Shanghai Office

Room 612, International business exhibition center,
9300 Hunan Road, Pudong, Shanghai, China
National toll-free No.:400-823-9177
T/ +86-21-50795277
F/ +86-21-50795277

US Office

19959 Sea Gull Way
Saratoga, CA 95070
U.S.A.
T/ +1-408-366-9866
F/ +1-408-446-1107

India Office

D. No. 12-13-99, Satguru Apts. Extn.
Street. No. 3, Lane No.1, Tarnaka
Secunderabad – 500 017. India
T/ +91-40-27001515
T/ +91-40-27001586

