

Taiwan Headquarters
Headquarters:

 No. 156, Sec. 1, Guoji Rd., Taoyuan Dist.,
 Taoyuan City 33061, Taiwan
 T/+886-3-3762878
 F/+886-3-3761310

Factory:

 No.19, Ln. 207, Huakang St. Bade Dist.,
 Taoyuan City 33464 Taiwan
 T/ +886-3-3623319
 F/ +886-3-3623133

US Office

 19959 Sea Gull Way
 Saratoga, CA 95070
 U.S.A.
 T/ +1-408-366-9866
 F/ +1-408-446-1107

Shanghai Office

 Room 612, International business exhibition center,
 9300 Hunan Road, Pudong, Shanghai, China
 National toll-free No.:400-823-9177
 T/ +86-21-50795277
 F/ +86-21-50795277

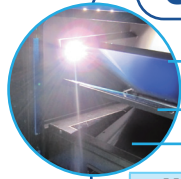
India Office

 D. No. 12-13-99, Satguru Apts. Extn.
 Street. No. 3, Lane No.1, Tarnaka
 Secunderabad – 500 017. India
 T/ +91-40-27001515
 F/ +91-40-27001586


SmartView Pro Imager

MS UVCI-2300, the truly standalone Gel Imaging System, delivers incredible image and sharpness with the power of an exceptional close-up monochrome 2.0 mega-pixel CCD camera, and get you ready for beautifully discriminable DNA/Protein gel images in the spaciouly intuitive 10.4" interface with color touch-screen. Our innovative systems are expandable with white and blue light plates coupled with the versatility of camera filters, no matter it's an EtBr or EtBr-free operations, simply tab to view. Many post-imaging features like drawer-type platform and UV protection shield are added to your convenience for gel excision.

Gel Documentation System



Flip-style:

White light plate

Blue light plate

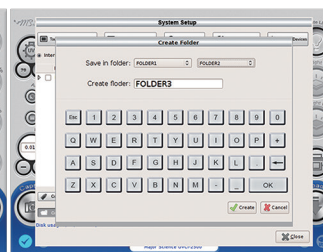
 Drawer-type
 UV transilluminator


Model	SmartView Pro 2300
Cat. No.	UVCI-2300
Camera	1/1.8" interline UXGA monochrome progressive 2.0MP CCD
Pixels Size	4.4µm x 4.4µm
Lens (Camera)	F1.2, 12.5 – 75mm (with one +1 close-up lens), 6X zoom lens, manual
Camera Video Output	12bit
Filter (Camera)*Ordered Separately	Optical EtBr Filter / Optical SYBR Green Filter / Orange Amber Filter
Image Storage	Built-in 14GB Memory (3000 tiff images storage) and USB flash
Cabinet	Pull out, sliding transilluminator
Field Of View (WxL)	Maximum filed od view 10.2"x8.3" (260x210mm)
Dimension (WxLxH)	Approx. 16.1"x16.7"x35.8" (410x425x910mm)
Weight	Approx. 62.8lbs. (28.5kg)
Display	10.4" color touch screen, 800x600
Viewing Window	Built-in UV viewing window
Window Filter	Amber Filter embedded in viewing window (580nm)
Light Source	Built-in drawer type UV Transilluminator 312(302)nm build-in LED white light
Optional Accessory	White Light Plate (power built-in) Blue light plate (power built-in) 470nm
Saved Image	Max. 16bit
Grayscale	12bit, 0-4095 gray levels
Safety	CE
Rated Voltage	100-240V~, 50/60Hz

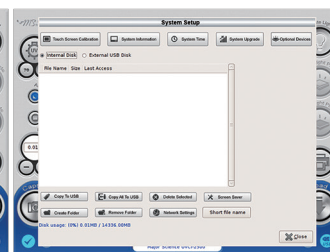
*MS 1D Analysis Software (MBE-IMG-SW) is included in for image analysis only.



UV light protection warning



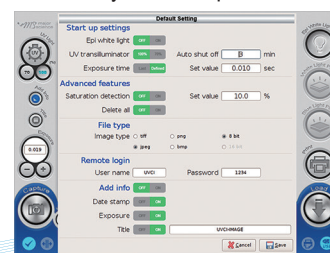
Batch file management



System setup

Features

- Standalone gel doc system with high-quality monochrome CCD
- Exchangeable emission Filters provide for instant visualization
- Intuitive 10.4" interface with color touch-screen
- Zoom-able lens for proper picture size
- Movable platform for gel excision with UV-protection shield
- Automatic UV shut off mechanism
- Optional trans white light and blue light plates



Default setting



SmartView Pro 2300